

## Musical Sequences and Functions

Coordinate conversion for Sequence 1 consisting of diatonic 1st, 2nd, and 5th degrees in the key of Bb (concert)

Tenor Note	Piano note	Note number	Y coordinate	Measure	Beat	Tick	X coordinate
C4	Bb3	46	-14	1	1	1	1.000
D4	C3	48	-12	1	1	1	1.125
G4	F3	53	-7	1	1	2	1.250
C5	Bb4	58	-2	1	1	2	1.375
D5	C4	60	0	1	1	3	1.500
G5	F 4	65	5	1	1	3	1.625
C6	Bb5	70	10	1	1	4	1.750
D6	C5	72	12	1	1	4	1.875
G6	F5	77	17	2	1	1	2.000
D6	C5	72	12	2	1	1	2.125
C6	Bb4	70	10	2	1	2	2.250
G5	F4	65	5	2	1	2	2.375
D5	C4	60	0	2	1	3	2.500
C5	Bb4	58	-2	2	1	3	2.625
G4	F3	53	-7	2	1	4	2.750
D4	C3	48	-12	2	1	4	2.875
C4	Bb2	46	-14	3	1	1	3.000

TENOR SAX.

## MUSICAL SEQUENCES AND FUNCTIONS

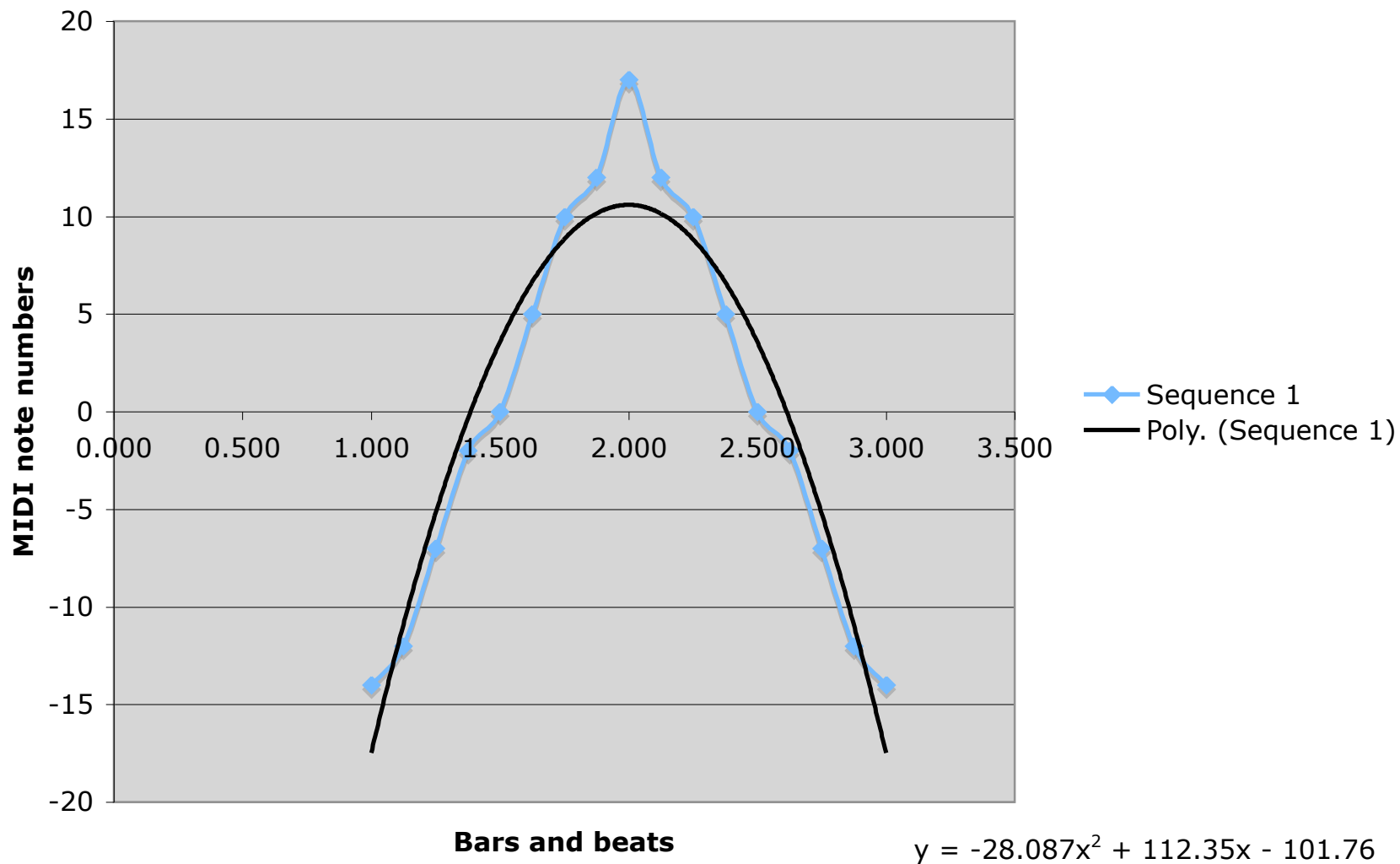
ED CALLE

SEQUENCE 1 (1st, 2nd, AND 5th DEGREES IN Bb MAJOR OR DORIAN)



# Musical Sequences and Functions

## Sequence 1 chart and trendline



## Musical Sequences and Functions

Coo

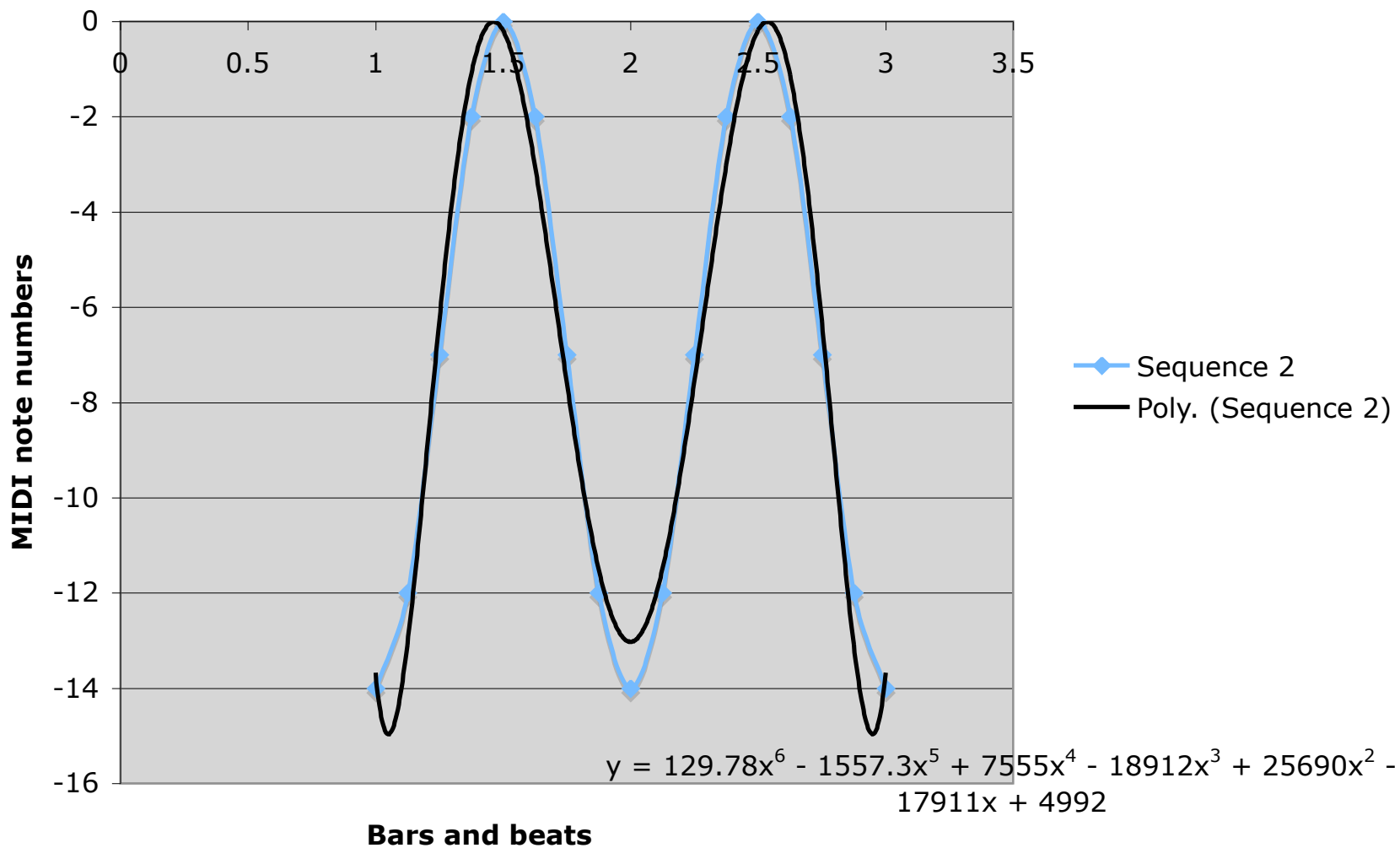
Tenor Note	Piano note	Note number	Y coordinate	Measure	Beat	Tick	X coordinate
C4	Bb3	46	-14	1	1	1	0
D4	C3	48	-12	1	1	1	480
G4	F3	53	-7	1	1	2	0
C5	Bb4	58	-2	1	1	2	480
D5	C4	60	0	1	1	3	0
C5	Bb4	58	-2	1	1	3	480
G4	F4	53	-7	1	1	4	0
D4	C3	48	-12	1	1	4	480
C4	Bb3	46	-14	2	1	1	0
D4	C3	48	-12	2	1	1	480
G4	F4	53	-7	2	1	2	0
C5	Bb4	58	-2	2	1	2	480
D5	C4	60	0	2	1	3	0
C5	Bb3	58	-2	2	1	3	480
G4	Eb3	53	-7	2	1	4	0
D4	C3	48	-12	2	1	4	480
C4	Bb2	46	-14	3	1	1	0

**SEQUENCE 2 (1-2-5 MUSICAL EXERCISE SPANNING A MAJOR 9TH INTERVAL)**



# Musical Sequences and Functions

## Sequence 2 chart and trendline



## Musical Sequences and Functions

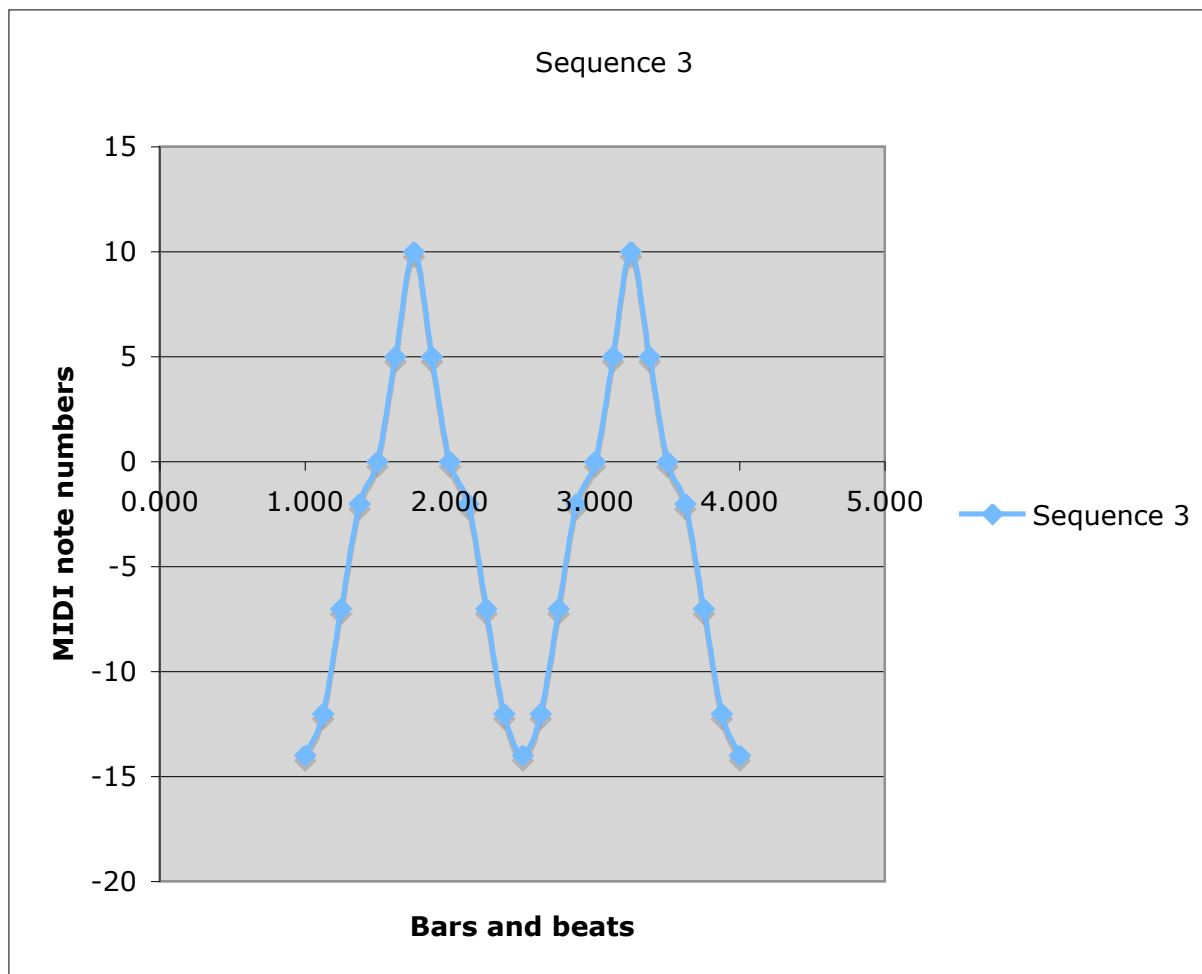
### Coordinate conversion and music notation for Sequence 3

Tenor Note	Piano note	Note number	Y coordinate	Measure	Beat	Tick	X coordinate
C4	Bb3	46	-14	1	1	1	0
D4	C3	48	-12	1	1	1	480
G4	F3	53	-7	1	2	2	0
C5	Bb4	58	-2	1	2	2	480
D5	C4	60	0	1	3	3	0
C5	Bb4	65	5	1	3	3	480
G4	F4	70	10	1	4	4	0
D4	C3	65	5	1	4	4	480
C4	Bb3	60	0	2	1	1	0
D4	C3	58	-2	2	1	1	480
G4	F4	53	-7	2	2	2	0
C5	Bb4	48	-12	2	2	2	480
D5	C4	46	-14	2	3	3	0
C5	Bb3	48	-12	2	3	3	480
G4	Eb3	53	-7	2	4	4	0
D4	C3	58	-2	2	4	4	480
C4	Bb2	60	0	3	1	1	0
		65	5	3	1	1	480
		70	10	3	2	2	0
		65	5	3	2	2	480
		60	0	3	3	3	0
		58	-2	3	3	3	480
		53	-7	3	4	4	0
		48	-12	3	4	4	480
		46	-14	4	1	1	0
			-60				
			-60				
			-60				
			-60				

# Musical Sequences and Functions

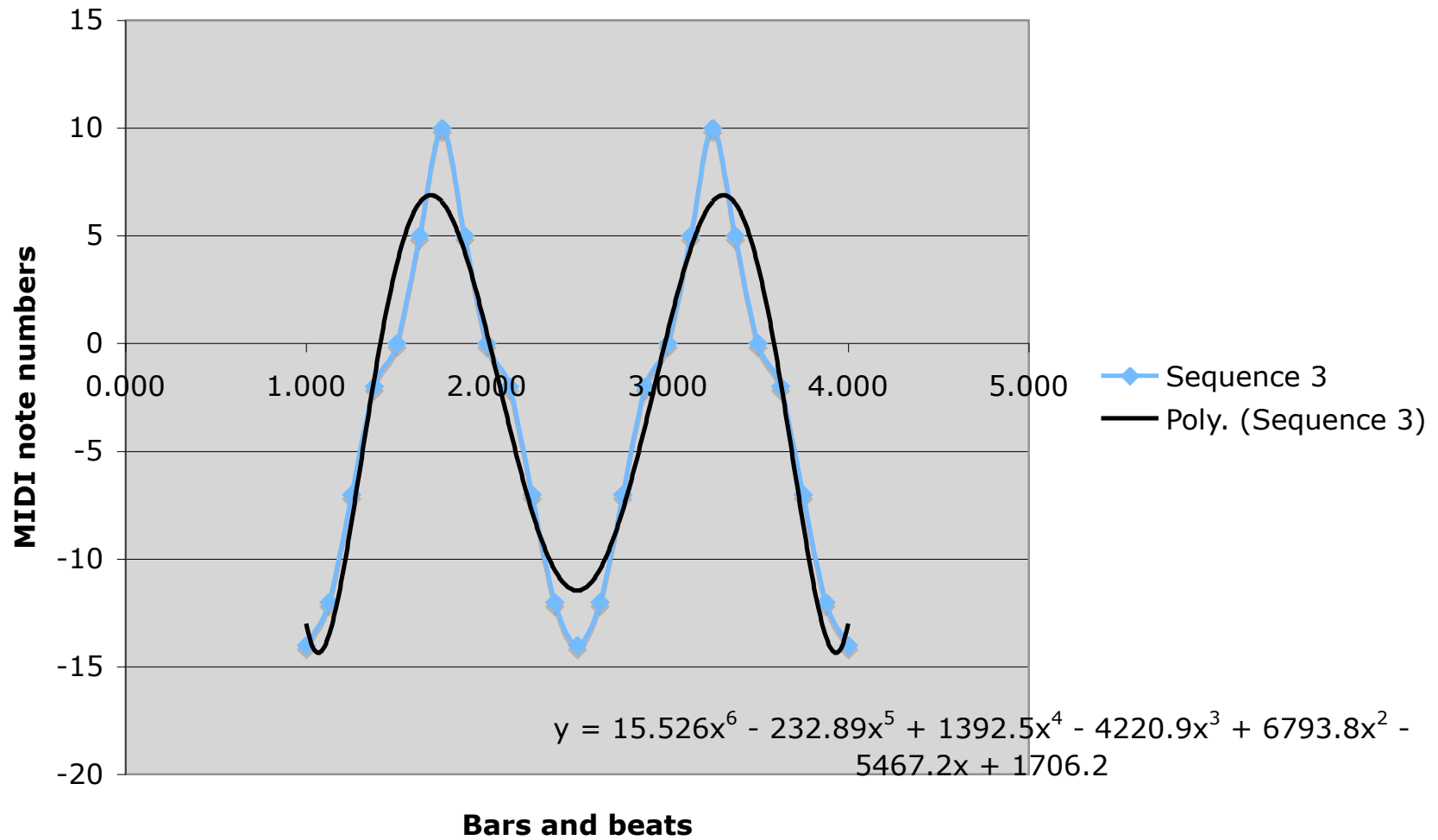
## Sequence 3

SEQUENCE 3 (1-2-5 MUSICAL EXERCISE SPANNING TWO OCTAVES)



# Musical Sequences and Functions

## Sequence 3 chart and trendline



## Musical Sequences and Functions

### Coordinate conversion and music notation for Sequence 4

Tenor Note	Piano note	Note number	Y coordinate	Measure	Beat	Tick	X coordinate
C4	Bb3	46	-14	1	1	1	0
D4	C3	48	-12	1	1	1	320
G4	F3	53	-7	1	1	1	640
C5	Bb4	49	-11	1	2	2	0
D5	C4	51	-9	1	2	2	320
C5	Bb4	56	-4	1	2	2	640
G4	F4	51	-9	1	3	3	0
D4	C3	53	-7	1	3	3	320
C4	Bb3	58	-2	1	3	3	640
D4	C3	53	-7	1	4	4	0
G4	F4	55	-5	1	4	4	320
C5	Bb4	60	0	1	4	4	640
D5	C4	56	-4	2	1	1	0
C5	Bb3	58	-2	2	1	1	320
G4	Eb3	63	3	2	1	1	640
D4	C3	58	-2	2	2	2	0
C4	Bb2	60	0	2	2	2	320
		65	5	2	2	2	640
		61	1	2	3	3	0
		63	3	2	3	3	320
		68	8	2	3	3	640
		63	3	2	4	4	0
		65	5	2	4	4	320
		70	10	2	4	4	640
		65	5	3	1	1	0
		67	7	3	1	1	320
		72	12	3	1	1	640
		68	8	3	2	2	0
		70	10	3	2	2	320
		75	15	3	2	2	640
		70	10	3	3	3	0
		72	12	3	3	3	320
		77	17	3	3	3	640



## Musical Sequences and Functions

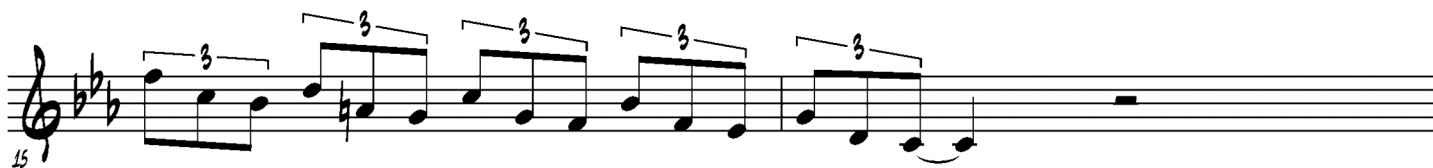
75	15	3	4	0	3.750
70	10	3	4	320	3.833
68	8	3	4	640	3.917
72	12	4	1	0	4.000
67	7	4	1	320	4.083
65	5	4	1	640	4.167
70	10	4	2	0	4.250
65	5	4	2	320	4.333
63	3	4	2	640	4.417
68	8	4	3	0	4.500
63	3	4	3	320	4.583
61	1	4	3	640	4.667
65	5	4	4	0	4.750
60	0	4	4	320	4.833
58	-2	4	4	640	4.917
63	3	5	1	0	5.000
58	-2	5	1	320	5.083
56	-4	5	1	640	5.167
60	0	5	2	0	5.250
55	-5	5	2	320	5.333
53	-7	5	2	640	5.417
58	-2	5	3	0	5.500
53	-7	5	3	320	5.583
51	-9	5	3	640	5.667
56	-4	5	4	0	5.750
51	-9	5	4	320	5.833
49	-11	5	4	640	5.917
53	-7	6	1	0	6.000
48	-12	6	1	320	6.083
46	-14	6	1	640	6.167
	-60		2	0	
	-60			320	
	-60			640	

# Musical Sequences and Functions

**SEQUENCE 4 - SERIES OF 1-2-5 SERIES DIATONIC TO B $\flat$  DORIAN SPANNING TWO OCTAVES PLUS ONE FIFTH.**

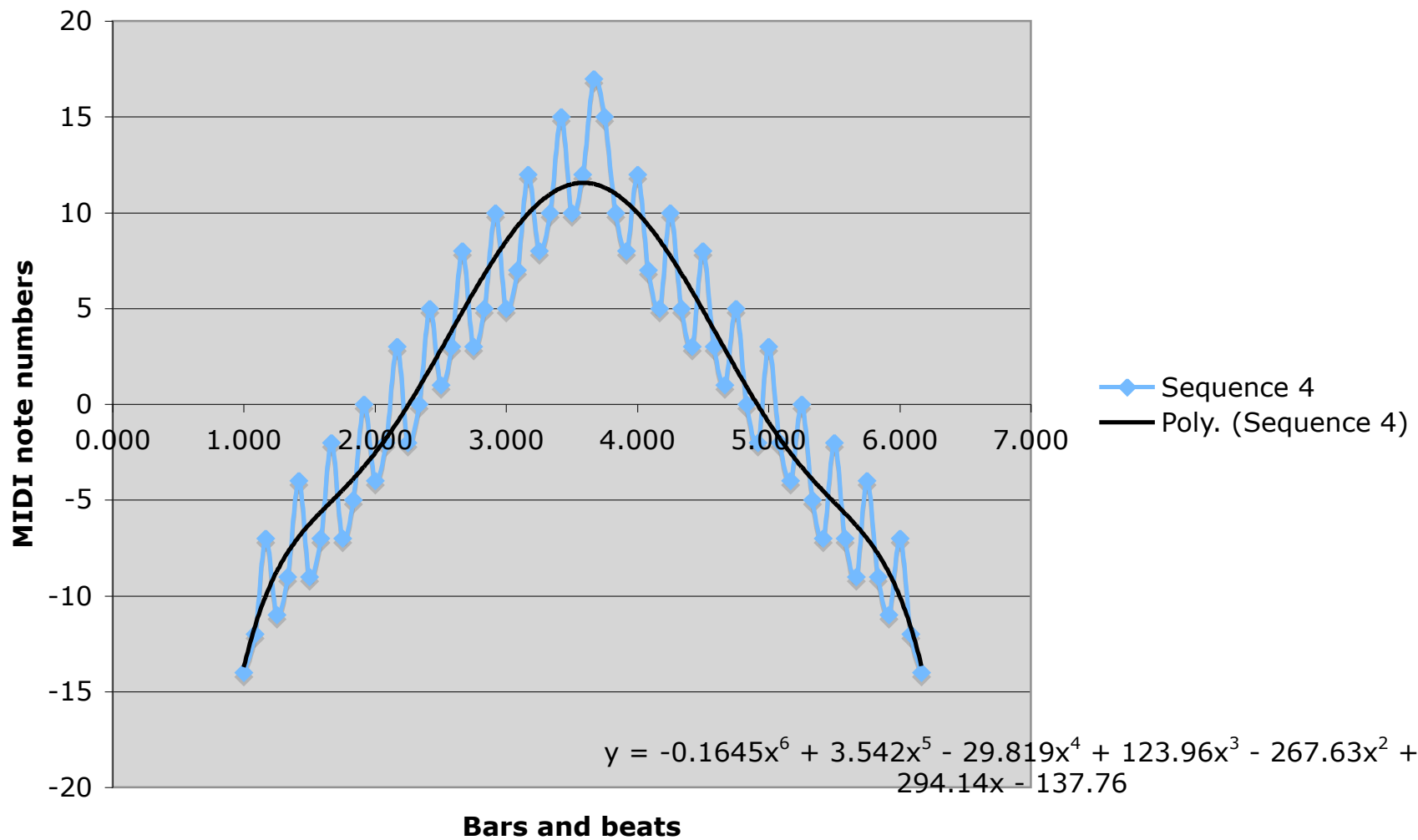
**VARIATIONS OF THIS SEQUENCE CAN BE APPLIED WHEN IMPROVISING ACCOMPANIED BY**

**B $\flat$ -7, E $\flat$ 7, D $\flat$ MA7(#11), G $\flat$ 7( $\flat$ 5), OR A7(#9,  $\flat$ 13) CHORDS.**



# Musical Sequences and Functions

## Sequence 4 Graph and trendline





## Musical Sequences and Functions

72	12	5	1	480	5.125
79	19	5	2	0	5.250
65	5	5	2	480	5.375
68	8	5	3	0	5.500
75	15	5	3	480	5.625
82	22	5	4	0	5.750
68	8	5	4	480	5.875
70	10	6	1	0	6.000
77	17	6	1	480	6.125
84	24	6	2	0	6.250

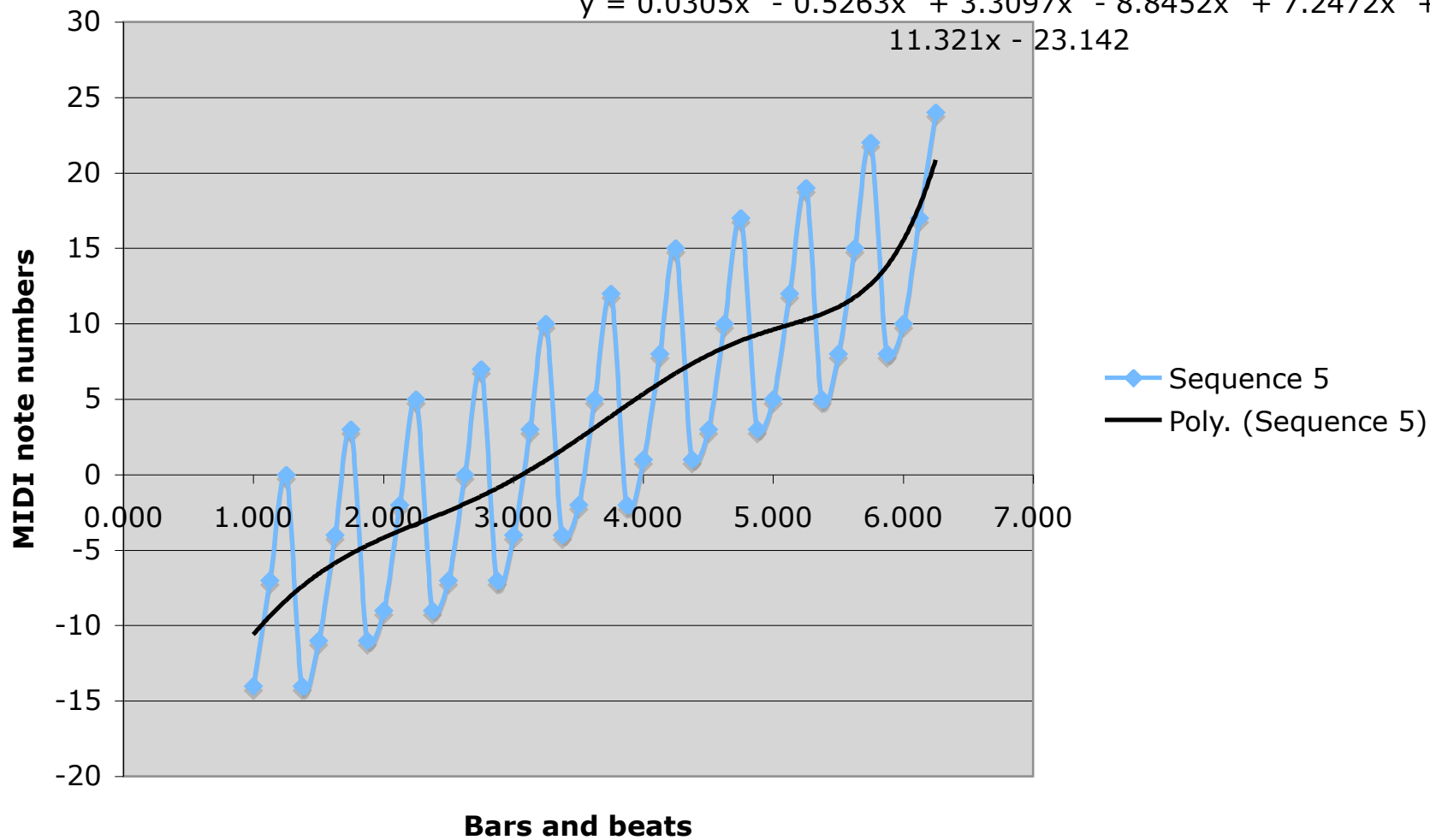
**SEQUENCE 5 - CONSECUTIVE ASCENDING PERFECT FIFTHS STARTING ON DEGREES 1, 3, 4, 5, AND 7 OF THE B $\flat$  DORIAN MODE. THIS SEQUENCE IS DIATONIC TO AND A SUBSET OF THE B $\flat$  DORIAN MODE.**



# Musical Sequences and Functions

## Sequence 5

$$y = 0.0305x^6 - 0.5263x^5 + 3.3097x^4 - 8.8452x^3 + 7.2472x^2 + 11.321x - 23.142$$



## Musical Sequences and Functions

Coordinate conversion, music notation, graph, and function for Sequence 6

Tenor Note	Piano note	Note number	Y coordinate	Measure	Beat	Tick	X coordinate
C4	Bb3	82	22	22	1	1	0
D4	C3	75	15	22	1	1	480
G4	F3	68	8	22	1	2	0
C5	Bb4	82	22	22	1	2	480
D5	C4	79	19	22	1	3	0
C5	Bb4	72	12	22	1	3	480
G4	F4	65	5	22	1	4	0
D4	C3	79	19	22	1	4	480
C4	Bb3	77	17	23	2	1	0
D4	C3	70	10	23	2	1	480
G4	F4	63	3	23	2	2	0
C5	Bb4	77	17	23	2	2	480
D5	C4	75	15	23	2	3	0
C5	Bb3	68	8	23	2	3	480
G4	Eb3	61	1	23	2	4	0
D4	C3	75	15	23	2	4	480
C4	Bb2	72	12	24	3	1	0
		65	5	24	3	1	480
		58	-2	24	3	2	0
		72	12	24	3	2	480
		70	10	24	3	3	0
		63	3	24	3	3	480
		56	-4	24	3	4	0
		70	10	24	3	4	480
		67	7	25	4	1	0
		60	0	25	4	1	480
		53	-7	25	4	2	0
		67	7	25	4	2	480
		65	5	25	4	3	0
		58	-2	25	4	3	480
		51	-9	25	4	4	0
		65	5	25	4	4	480
		63	3	26	5	1	0

## Musical Sequences and Functions

56	-4	5	1	480	5.125
49	-11	5	2	0	5.250
63	3	5	2	480	5.375
60	0	5	3	0	5.500
53	-7	5	3	480	5.625
46	-14	5	4	0	5.750
60	0	5	4	480	5.875
58	-2	6	1	0	6.000
51	-9	6	1	480	6.125
44	-16	6	2	0	6.250
58	-2	6	2	480	6.375

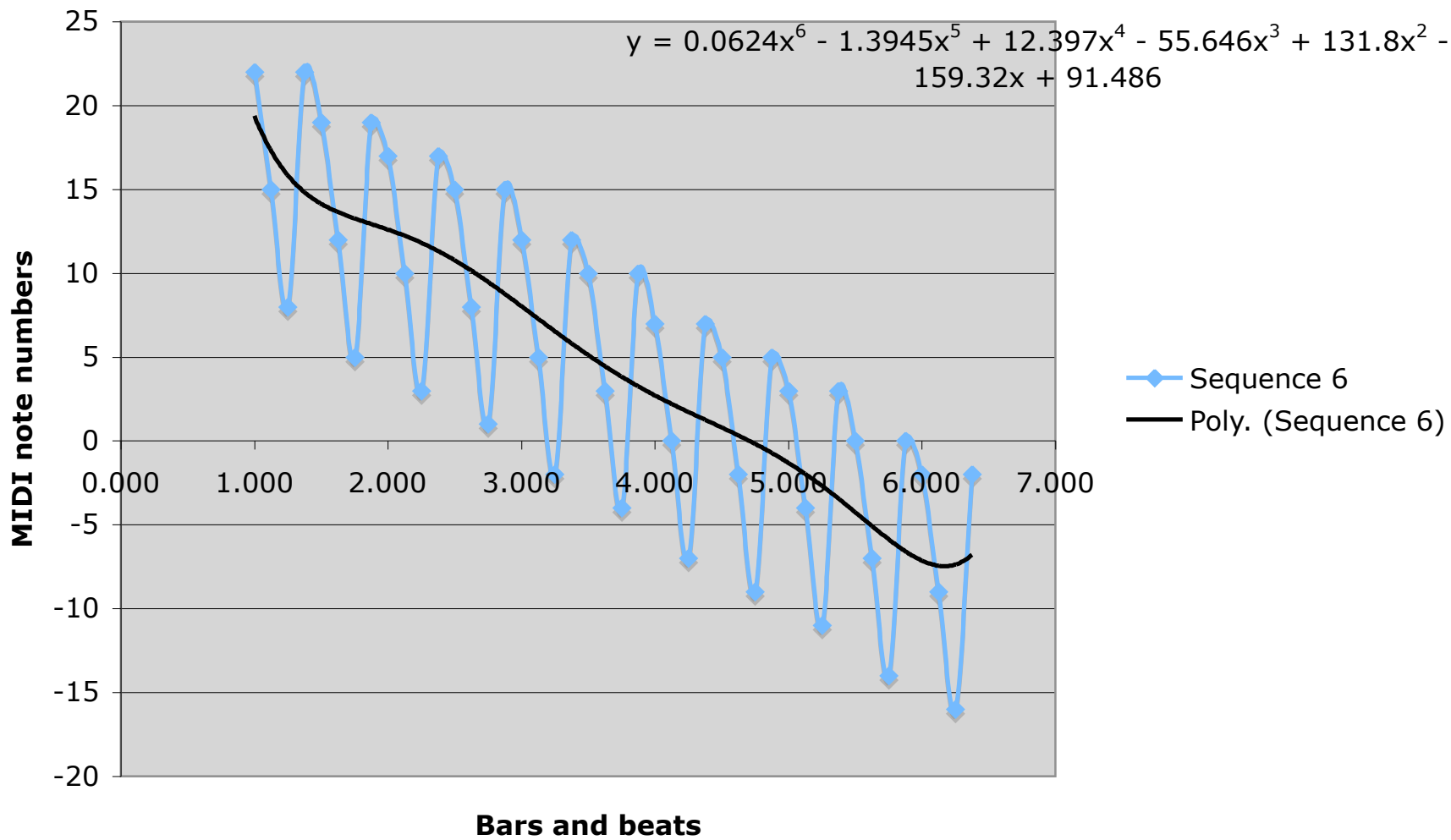
**SEQUENCE 6 - CONSECUTIVE DESCENDING PERFECT FIFTHS STARTING ON DEGREES 1, 3, 4, 5, AND 7 OF THE B $\flat$  DORIAN MODE. THIS SEQUENCE IS DIATONIC TO AND A SUBSET OF THE B $\flat$  DORIAN MODE.**





Musical Sequences and Functions

Sequence 6 chart and trendline





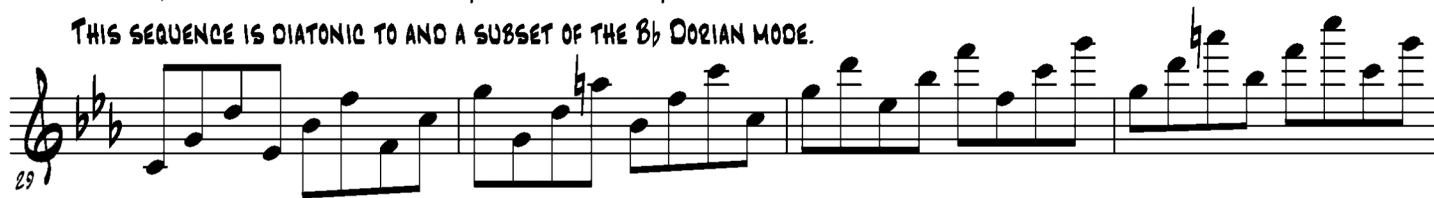
## Musical Sequences and Functions

82	22	5	1	480	5.125
75	15	5	2	0	5.250
68	8	5	2	480	5.375
79	19	5	3	0	5.500
72	12	5	3	480	5.625
65	5	5	4	0	5.750
77	17	5	4	480	5.875
70	10	6	1	0	6.000
63	3	6	1	480	6.125
75	15	6	2	0	6.250
68	8	6	2	480	6.375
61	1	6	3	0	6.500
72	12	6	3	480	6.625
65	5	6	4	0	6.750
58	-2	6	4	480	6.875
70	10	7	1	0	7.000
63	3	7	1	480	7.125
56	-4	7	2	0	7.250
67	7	7	2	480	7.375
60	0	7	3	0	7.500
53	-7	7	3	480	7.625
65	5	7	4	0	7.750
58	-2	7	4	480	7.875
51	-9	8	1	0	8.000
63	3	8	1	480	8.125
56	-4	8	2	0	8.250
49	-11	8	2	480	8.375
60	0	8	3	0	8.500
53	-7	8	3	480	8.625
46	-14	8	4	0	8.750

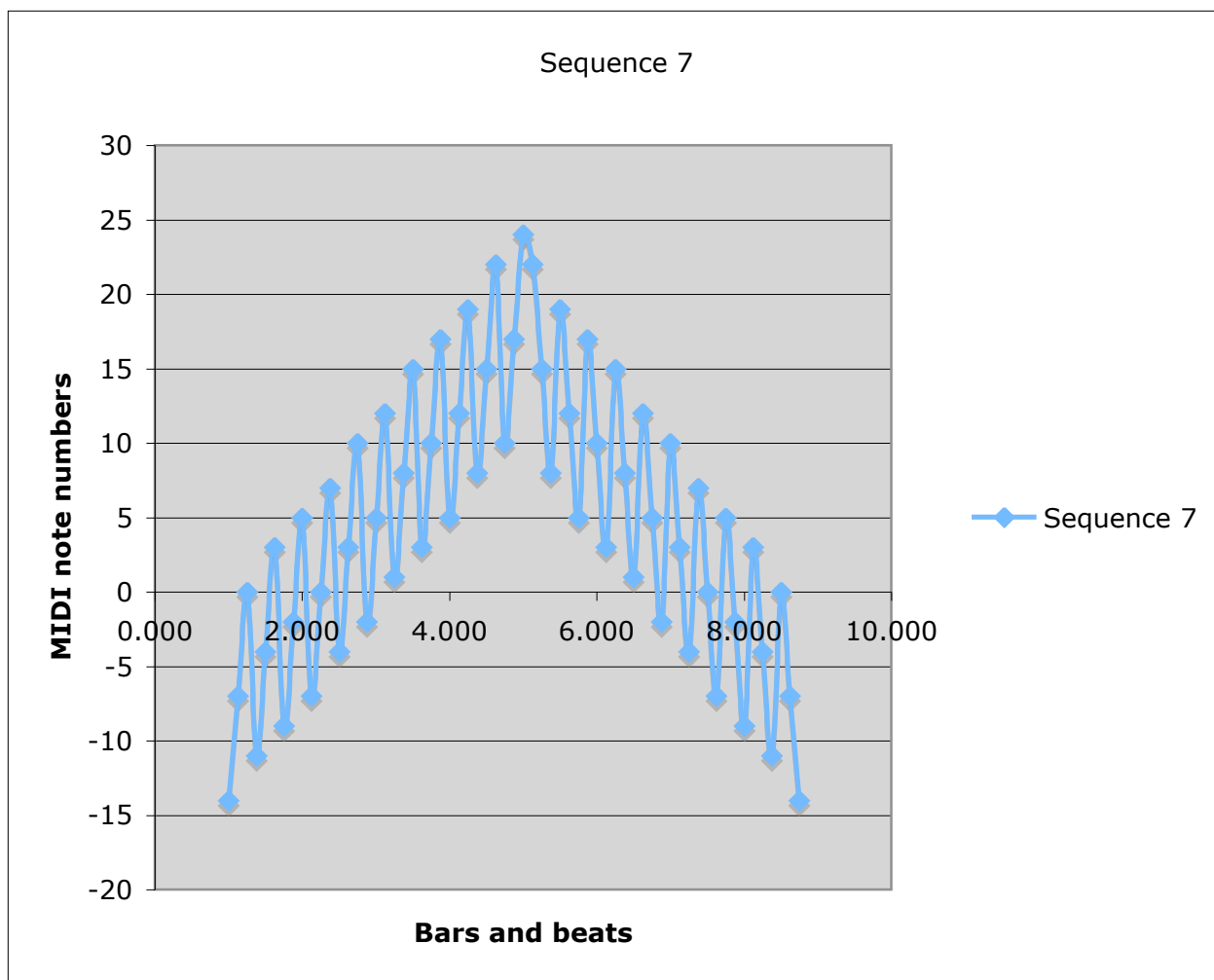
## Musical Sequences and Functions

**SEQUENCE 7 - CONSECUTIVE PERFECT FIFTHS STARTING ON DEGREES 1, 3, 4, 5, AND 7  
OF THE B $\flat$  DORIAN MODE IN ASCENDING AND DESCENDING FASHION.**

**THIS SEQUENCE IS DIATONIC TO AND A SUBSET OF THE B $\flat$  DORIAN MODE.**



# Musical Sequences and Functions



# Musical Sequences and Functions

## Sequence 7 graph and trendline

